

MY DOG, HEN

dog toy* pattern

Make your own plush** of the dog toy Grandma made for Hen in the book by David Mackintosh.

Step-by-step instructions and tips for making and customising in a style of your own.

* NOT DOG PROOF

** not a life saving device



AS
SEEN
IN
BOOKS

Thank you to Debbie T for turning a drawing in a book into this beautifully realised three dimensional plush. These patterns are free to use under the CC licence.

Copyright of illustrations and text remains with David Mackintosh/profuselyillustrated.com. 2022. My Dog, Hen is published by Prestel Junior.

The material...

Use whatever materials you want: try different types of cloth, or stuff the plush with what you think will work best. Hen's dog toy was made from scraps of things he had chewed up – so be adventurous, like Grandma. Try a combination of fabrics for the different parts, or try old t-shirts or bed sheets.

Buttons or not...

You don't need to use real buttons if you don't want to for the eyes and chest, and they can be any size you want. You could make the buttons from felt or even cardboard. Some people just draw them on with a marker pen.

Zipper, or not...

We put a zipper in the back of the body to see how it would look. But it's an added extra and not crucial to the construction.

What size is it?...

If you print the pattern at 100 percent, the full length of the finished doll from tip to toe is about 106cm/42 inches. The material quantities shown are for a plush this size. These pattern pages are A3.

How many parts?...

There are 9 separate parts that make up the plush. Once each part is stitched and stuffed, they will be joined together to make the complete figure.

How long does it take?

An expert: about a day.

A beginner: how long is a piece of thread?

David Mackintosh: ask someone else to make it.

(The simple version only takes a few minutes to cut out and fasten together ready for stuffing.)

Let's see it...

Post a photo using [#mydoghenplush](#)

Or tell me about it at www.profuselyillustrated.com

What you need...

- 1 metre x 1 metre woven fabric - corduroy, cotton drill, flannelette, broadcloth work well. Choose a fabric that isn't so thin it rips at the seams when stuffing the dog toy or so thick it is difficult to sew through. (We used red cotton drill).
.....
- 5 white buttons in different sizes - buttons 2cm - 2.5 cm work well - or 15cm x 5cm white/cream felt
.....
- Sewing thread in a colour matching your fabric
.....
- Scissors
.....
- Pins
.....
- Hand sewing needle
.....
- Pen or pencil
.....
- Batting or fibrefill for stuffing
.....
- Large size crochet hook or knitting needle or similar tool with a blunt end to stuff the toy.
.....
- the paper patterns, which you can print out from this PDF.
.....



Cutting and marking

1. Cut out the paper pattern pieces.
2. From your chosen fabric(s), cut out 2 of each of the ears, arms, legs, nose, head and body pieces. You can double the fabric (fold it in two) and cut the two pieces in one cut! See (i).

Tip: Use a pen to mark sewing gaps and the positions for attaching arms, legs, head and ears. See (ii).

3. Place the front head piece right side up*. Mark the position of the eyes and nose.

4. Place the front body piece right side up. Mark the position of the buttons.

* right side: the side of the fabric which will be on the outside of the plush when finished.

Machine sewing

5. Pin the ears, nose, arms and legs right sides together and sew around the edge, leaving a gap for the opening. See (iii) & (iv).

6. Turn the ears, nose, arms and legs right side out. See (v).

7. Place the back head piece right side up and use the marks to position the ears (they should be right side out and pointing down towards the neck). Place the front head piece right side down on top of the ears. See (vi) and Fig.1.

8. Pin the head together, making sure that the ears are folded out of the way, and sew around the edge of the head, leaving a gap for the opening. – Fig.1.

9. Turn the head right side out. – Fig.2.

10. Place the back body piece right side up and use the marks to position the head, arms and legs (the head, arms and legs should be right side out and all pointing in towards the body). Place the front body piece right side down on top of the head, arms and legs.

11. Pin the body together, making sure that the head, arms and legs are folded out of the way, and sew around the edge of the body, leaving a gap for the opening.

12. Turn the body right side out.

Stuffing & hand stitching

13. Use the markings on the body to position the buttons (if you're adding buttons) and use a hand sewing needle to attach them.

14. Use the markings on the head to position the eyes (buttons or felt) and use a hand sewing needle to attach them.

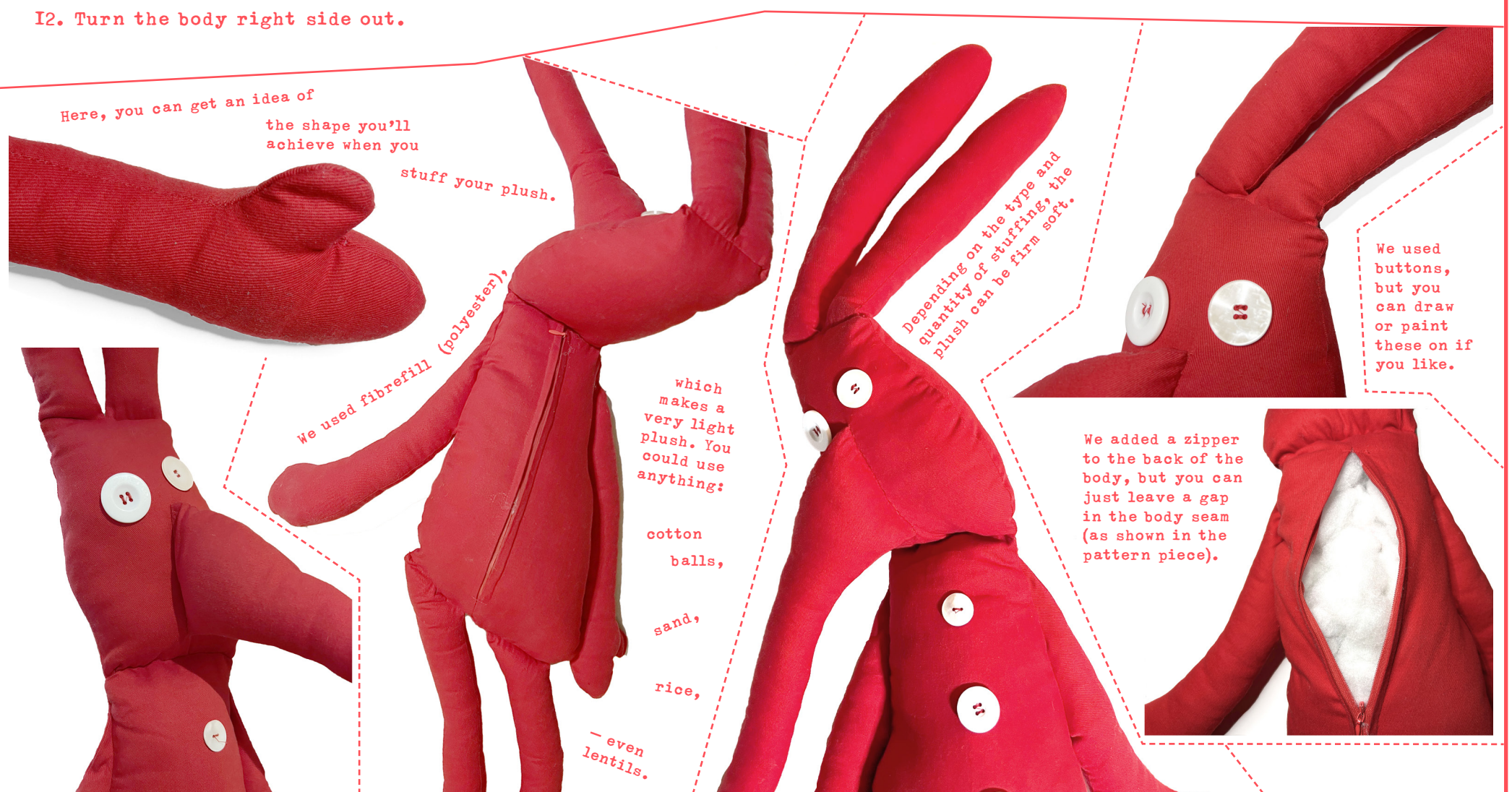
15. Stuff the ears, nose, head, arms, legs and body. A large crochet hook, knitting needle or similar tool is useful to get the stuffing into each of the pieces – be careful not to use anything that might poke a hole in the fabric. See (vii).

16. Use a hand sewing needle to sew together the openings of the ears, nose, head, arms, legs and body using an invisible stitch (also known as a ladder, slip, blind and hidden stitch). – Fig.3.

17. Use the markings on the head to position the nose and, using the invisible stitch technique, sew the nose to the head of the toy.



Almost finished: the plush is nearly fully stuffed with fibrefill.



Here, you can get an idea of the shape you'll achieve when you

stuff your plush.

We used fibrefill (polyester),

which makes a very light plush. You could use anything:

cotton balls,

sand,

rice,

– even lentils.

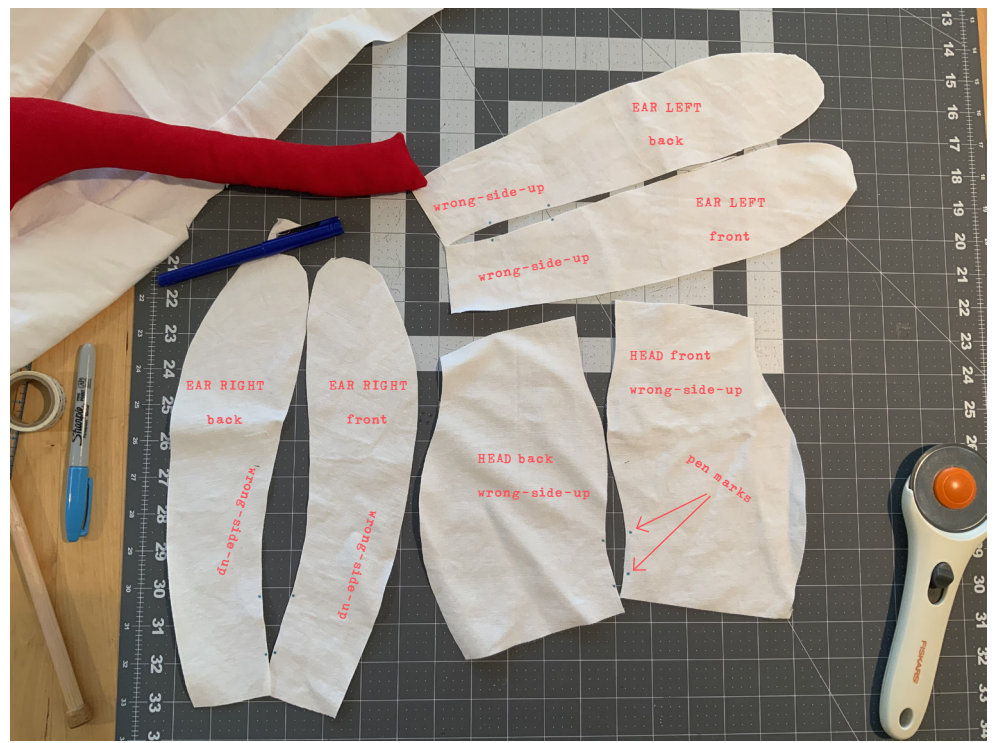
Depending on the type and quantity of stuffing, the plush can be firm soft.

We used buttons, but you can draw or paint these on if you like.

We added a zipper to the back of the body, but you can just leave a gap in the body seam (as shown in the pattern piece).



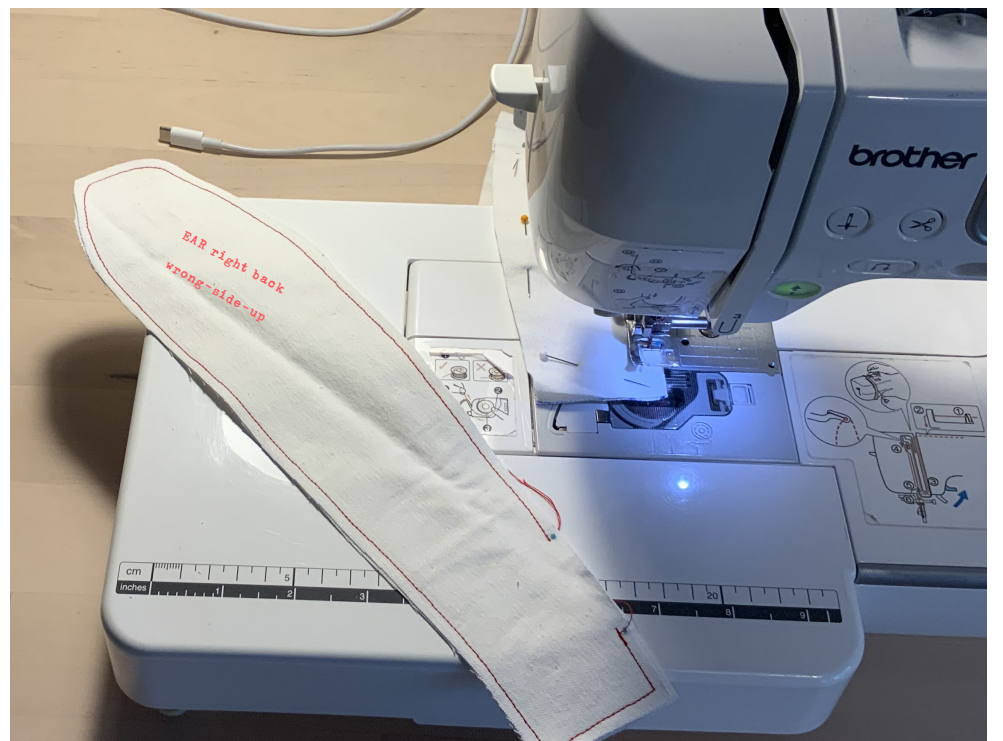
(i) Pattern pieces laid on folded cloth ready for cutting.



(ii) The cut fabric pieces – fronts and backs – with gaps marked in pen.



(iii) Front and back pieces pinned together for machine sewing.



(iv) Machine sewn ear piece showing unsewn gap at pen marks.



(v) Machine sewn ears turned right side out. The head is ready to be constructed.



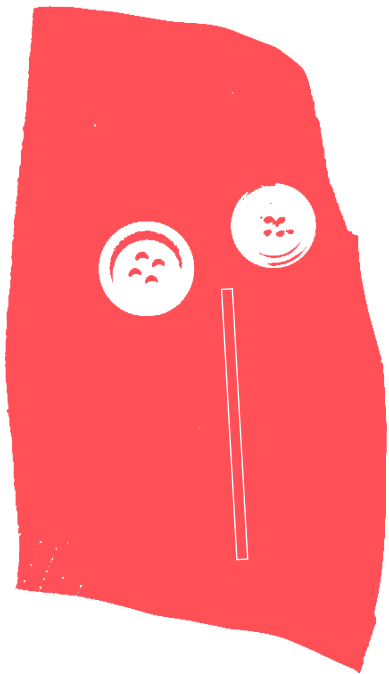
(vi) The ears in position, the head pieces sandwich the ears ready for sewing: see Figure I. Head pieces should be wrong side out at this stage.



(vii) (left) : Stuffing through one of the unsewn gaps. We used a drumstick to help insert the fibrefill, but you can use anything: a chopstick, a paintbrush handle or a wooden spoon.

We used white calico in these pictures for demonstration purposes. You could happily use white calico for your plush and then paint your own fabric design on top of the blank canvas.

Pattern Piece Reference Sheet...

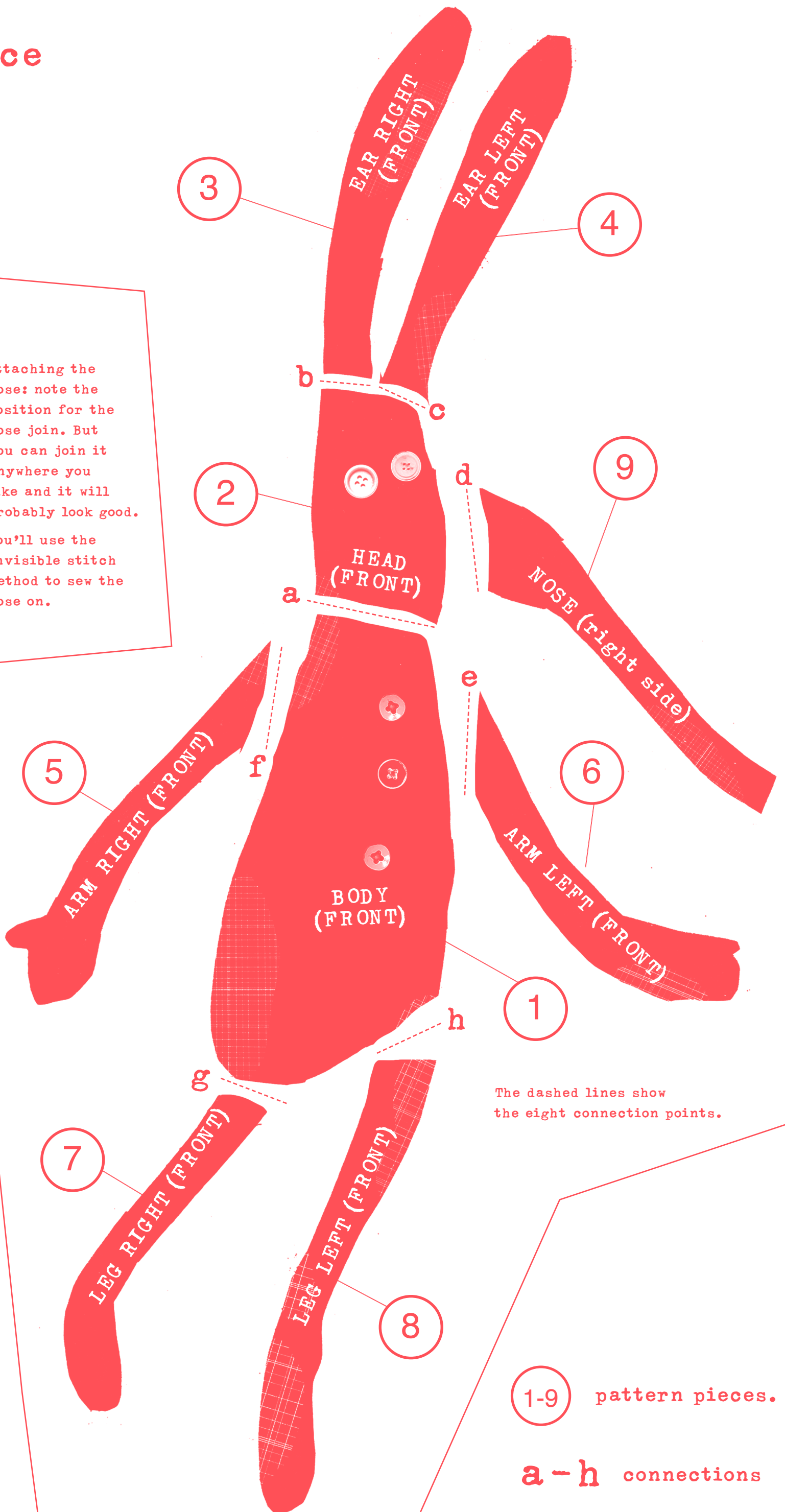


Attaching the nose: note the position for the nose join. But you can join it anywhere you like and it will probably look good.

You'll use the invisible stitch method to sew the nose on.

REMEMBER:

Each part is sewn together first, then attached to the body, and finally stuffed when the figure is in one piece. A gap must be left in the sewn seam of each piece so that you can insert stuffing material. This gap is then sealed using an invisible stitch.



The dashed lines show the eight connection points.

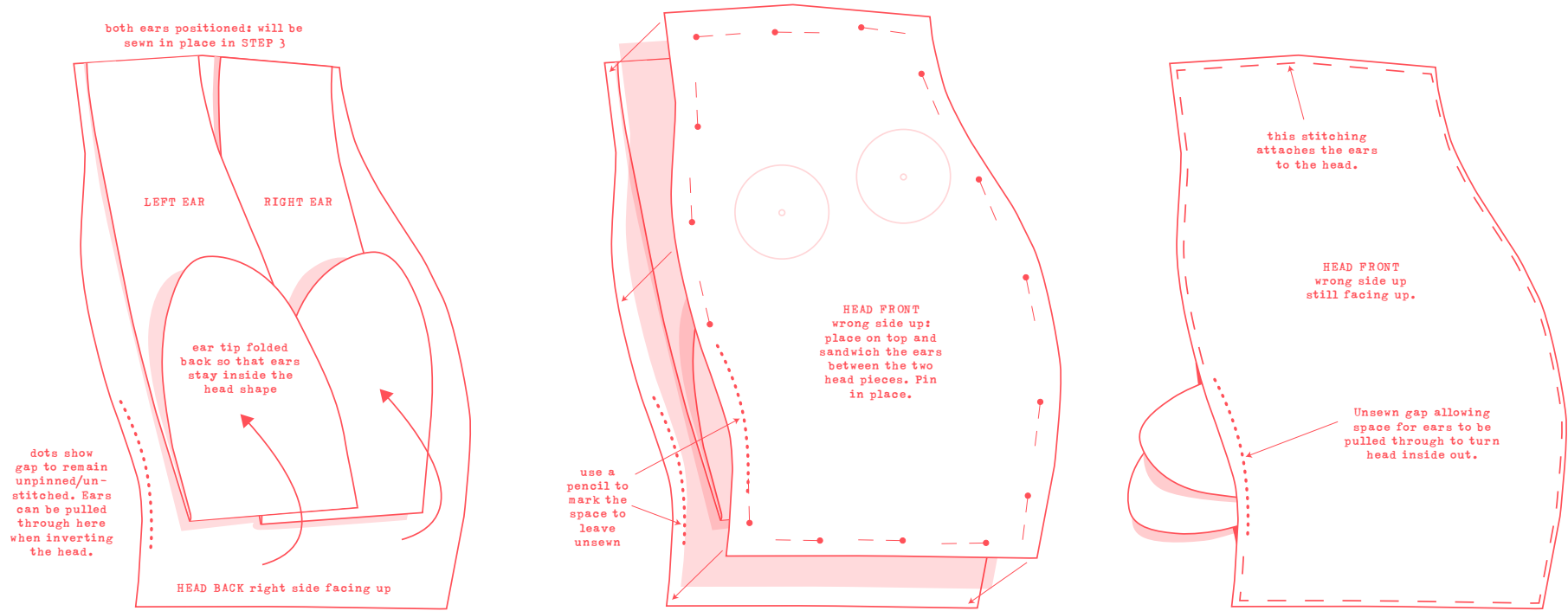
1-9 pattern pieces.

a-h connections

PRINT PAGES 7-12 FOR ALL PATTERN PIECES.

PRINT PAGE 13 FOR THE SIMPLE TOY SHAPE.

Figure 1.



a. The 2 separate ears are lying on top of the fabric of the HEAD BACK piece which is right side up. Both ears have been sewn together but are unstuffed. They are right side out i.e they are no longer inside-out.

b. The ears are now sandwiched between the back and front head pieces. The edges are pinned ready to be machine sewn together.

c. The HEAD is now sewn together. The ear tips inside have been pulled through the unsewn gap.

Figure 2.

This shows the HEAD piece ready to be turned inside out. Reach into the unsewn gap, draw the EARS through and turn the piece inside out.

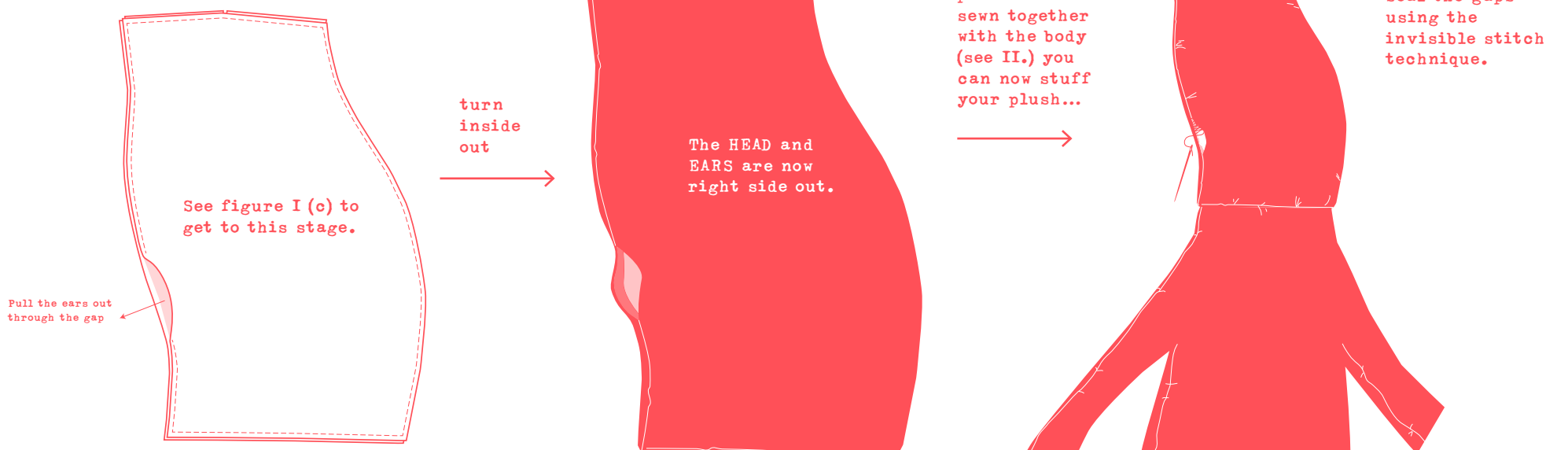


Figure 3. The Invisible Stitch



A. Thread the needle in a colour matching your fabric - doubling the thread is stronger - and tie a knot at the end. Fold the two edges of the fabric inward and make a crease in the fabric by finger pressing each side where you want the seams to be.



B. Start sewing where the machine stitching ended. Insert the needle from the inside of the opening. Make a small 3mm stitch along the seam parallel and then go straight across at a 90 degree angle to the other side of the opening and repeat the stitch.



C. Continue stitching in this way on alternate sides of the opening. The thread will start to look like the rungs on a ladder until you pull the thread taut (don't pull the thread too tight as this might cause the fabric to gather and pucker).



D. At the other end of the opening, secure the seam by bringing your needle through a loop in your thread and making a knot. Hide the tail of the thread by pushing the needle through the fabric close to the knot and out the side of the fabric. Pull gently on the thread and then cut it off close to the fabric.

Cut the pattern piece out of the paper along the solid line.

Pin the pattern to 2 layers of fabric, wrong sides together. Cut the fabric to the shape of the pattern piece.

Stitch the two fabric pieces together along the dashed line, leaving a gap in your stitching for stuffing.

The shaded area shows where a separate part attaches.



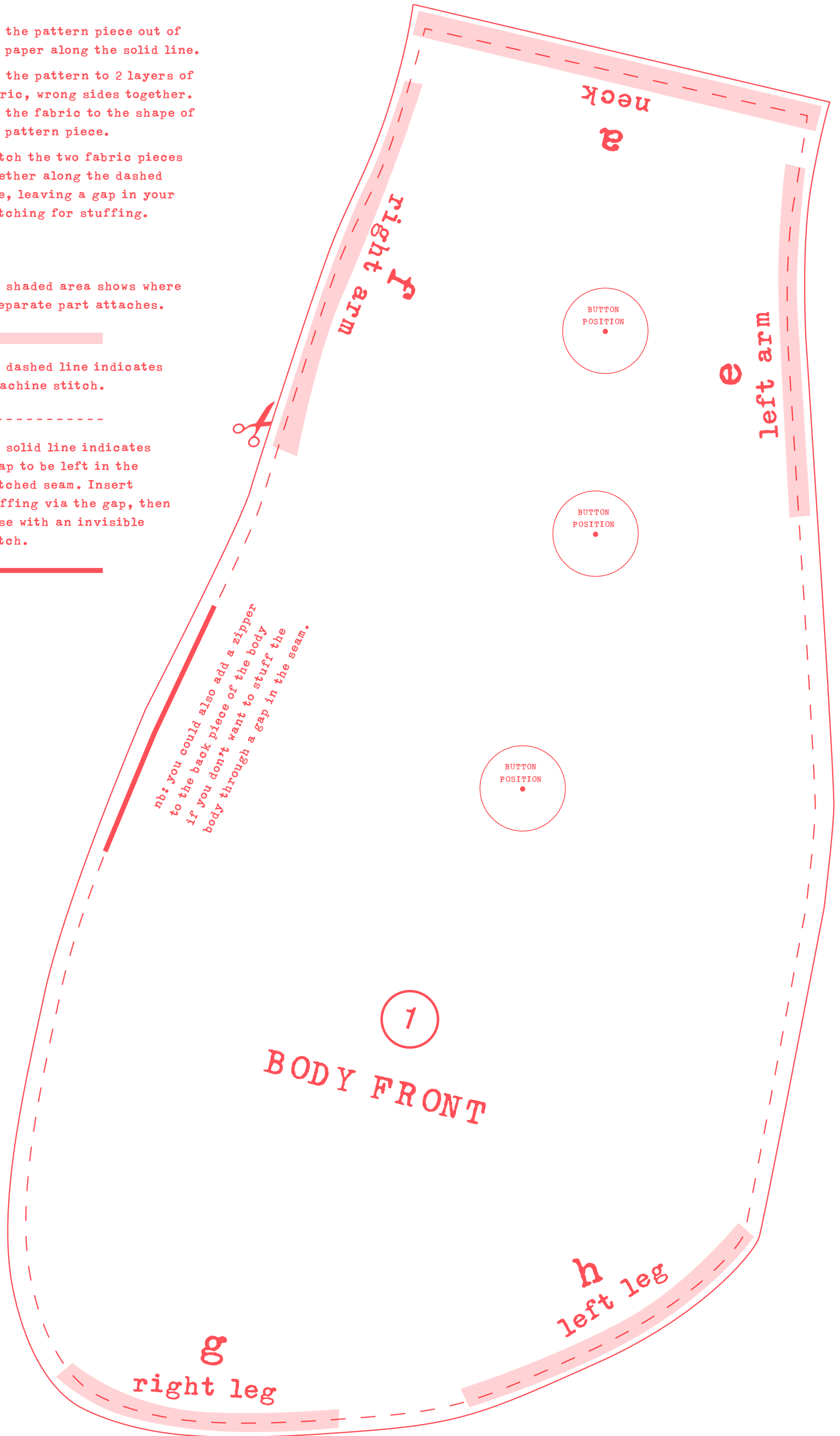
The dashed line indicates a machine stitch.

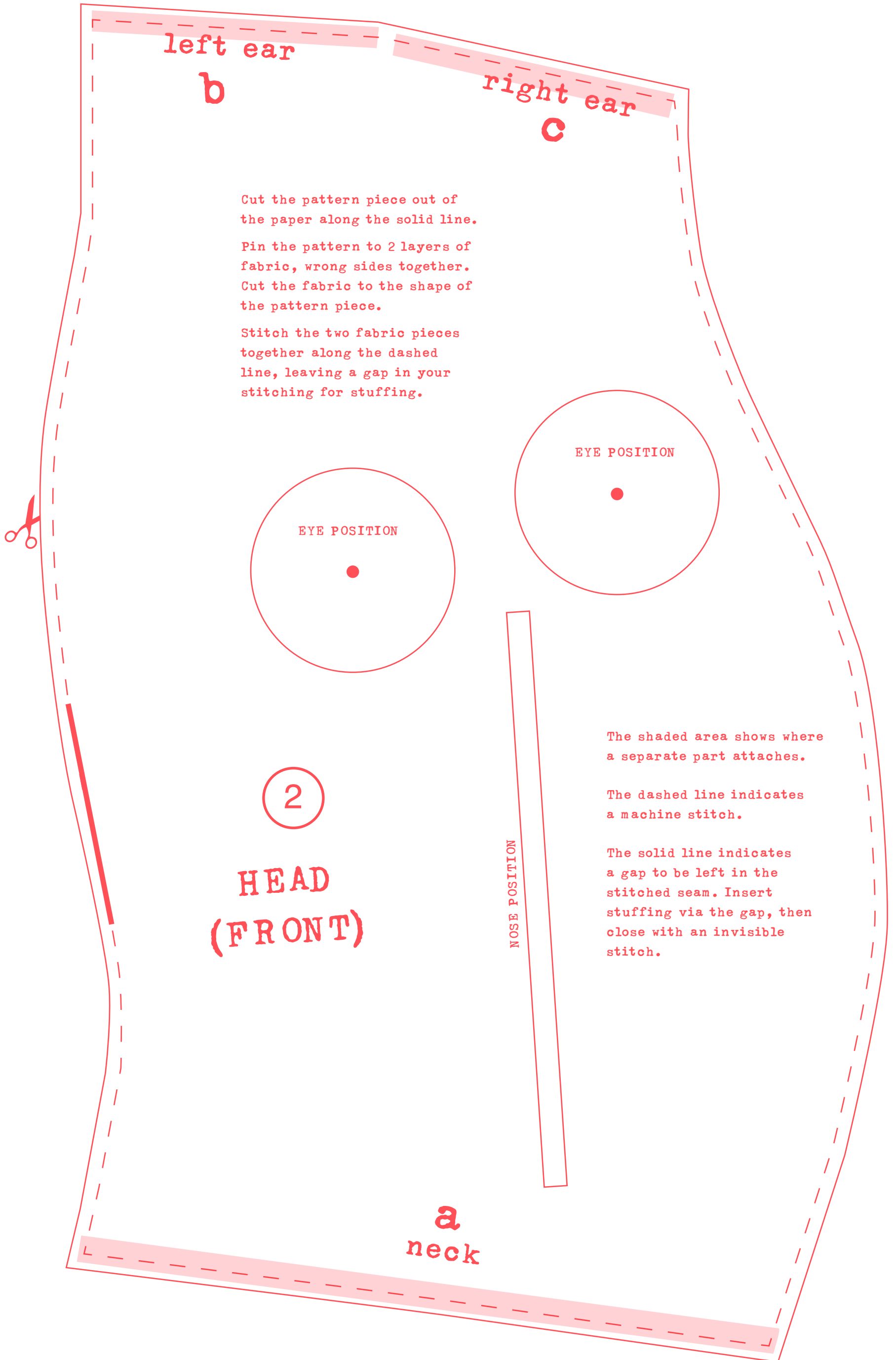


The solid line indicates a gap to be left in the stitched seam. Insert stuffing via the gap, then close with an invisible stitch.



nb: you could also add a zipper to the back piece of the body if you don't want to stuff the body through a gap in the seam.

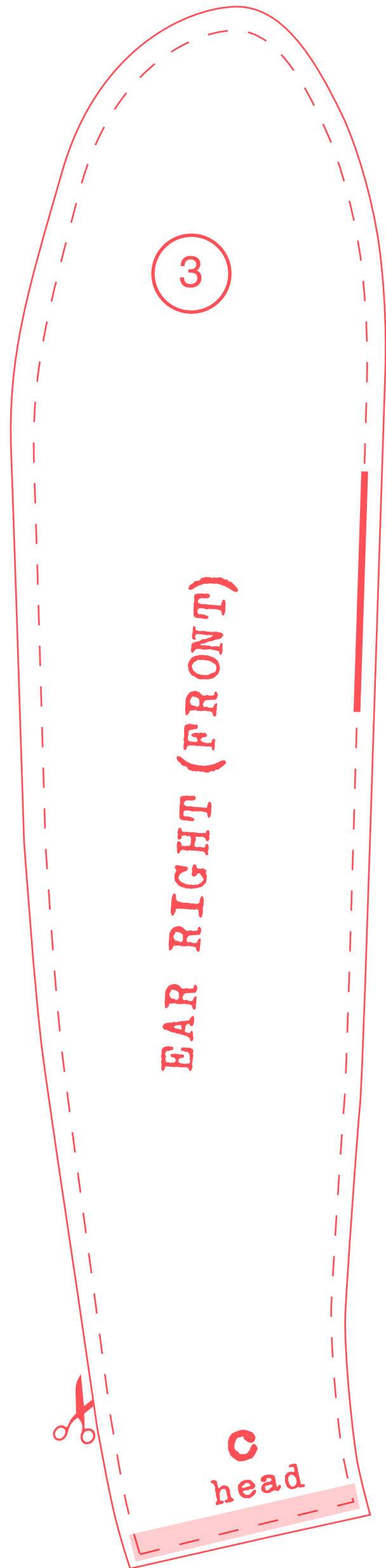
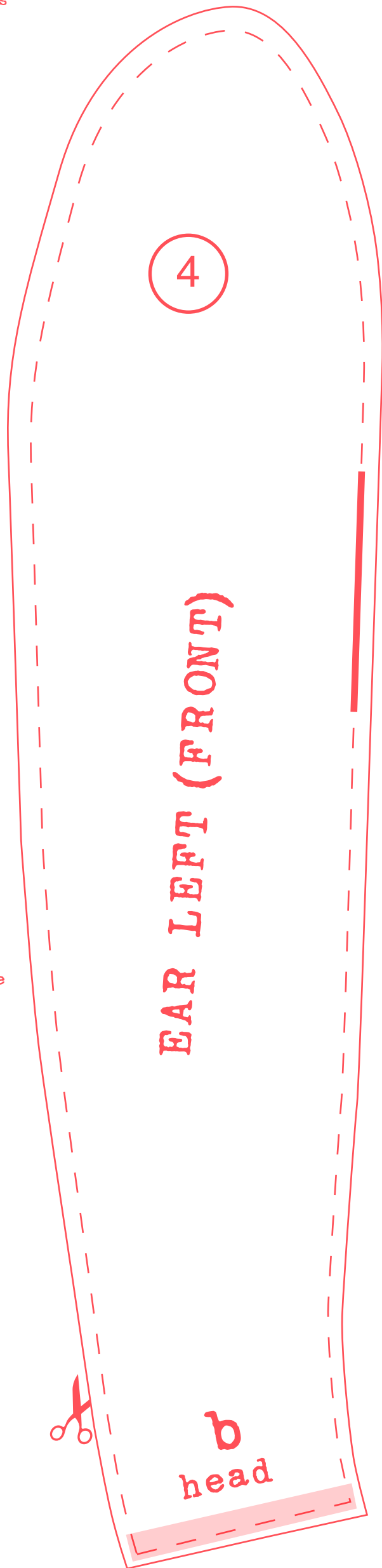




Cut the pattern piece out of the paper along the solid line.

Pin the pattern to 2 layers of fabric, wrong sides together. Cut the fabric to the shape of the pattern piece.

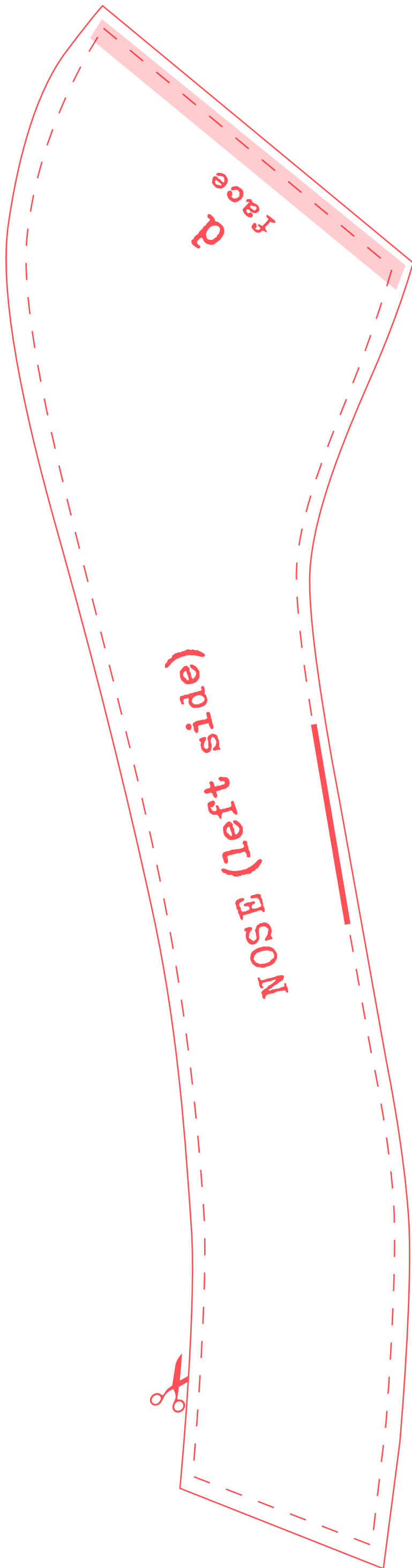
Stitch the two fabric pieces together along the dashed line, leaving a gap in your stitching for stuffing.



The shaded area shows where a separate part attaches.

The dashed line indicates a machine stitch.

The solid line indicates a gap to be left in the stitched seam. Insert stuffing via the gap, then close with an invisible stitch.



Cut the pattern piece out of the paper along the solid line.

Pin the pattern to 2 layers of fabric, wrong sides together. Cut the fabric to the shape of the pattern piece.

Stitch the two fabric pieces together along the dashed line, leaving a gap in your stitching for stuffing.

The shaded area shows where a separate part attaches.

The dashed line indicates a machine stitch.

The solid line indicates a gap to be left in the stitched seam. Insert stuffing via the gap, then close with an invisible stitch.

Cut the pattern piece out of the paper along the solid line.

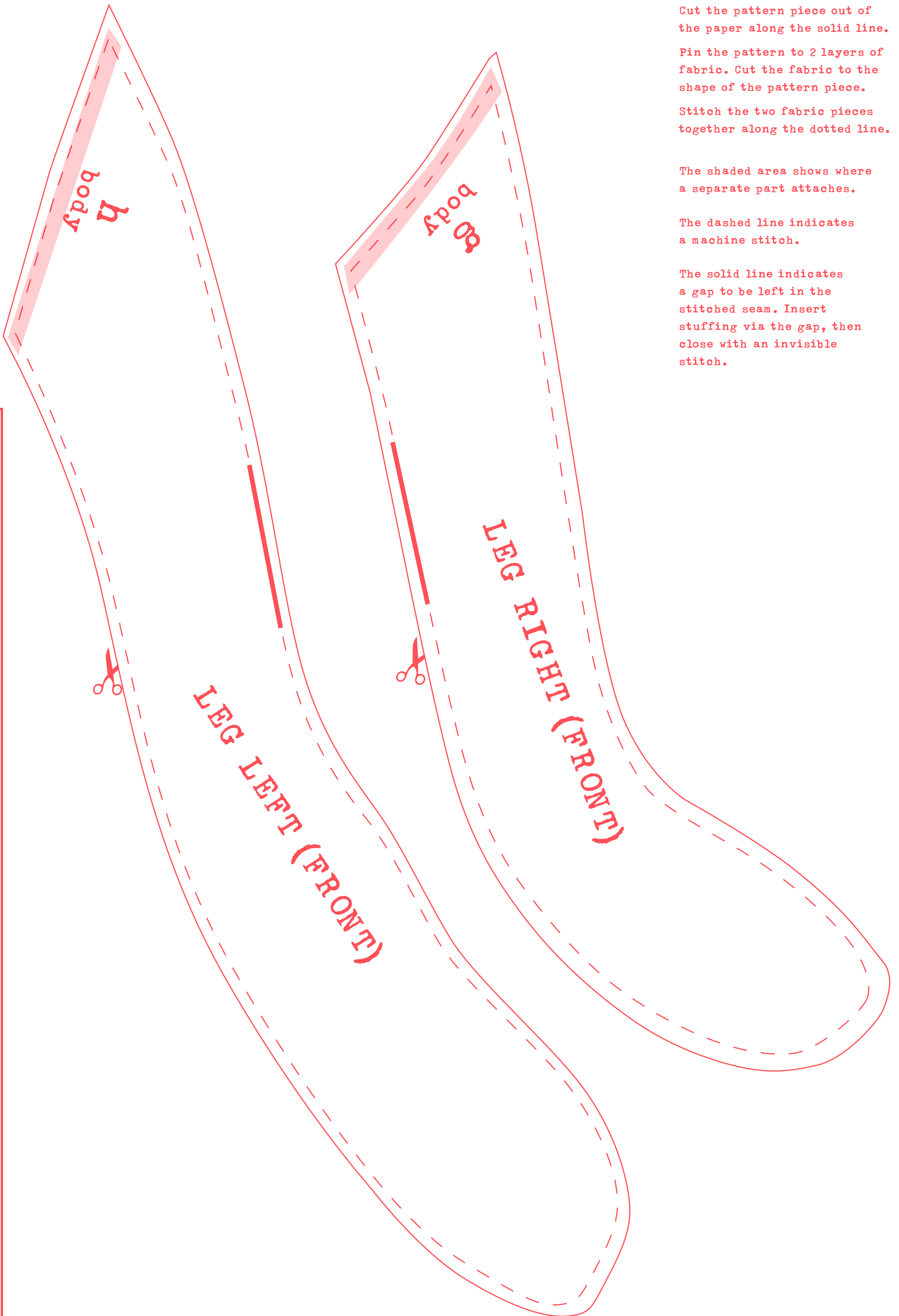
Pin the pattern to 2 layers of fabric. Cut the fabric to the shape of the pattern piece.

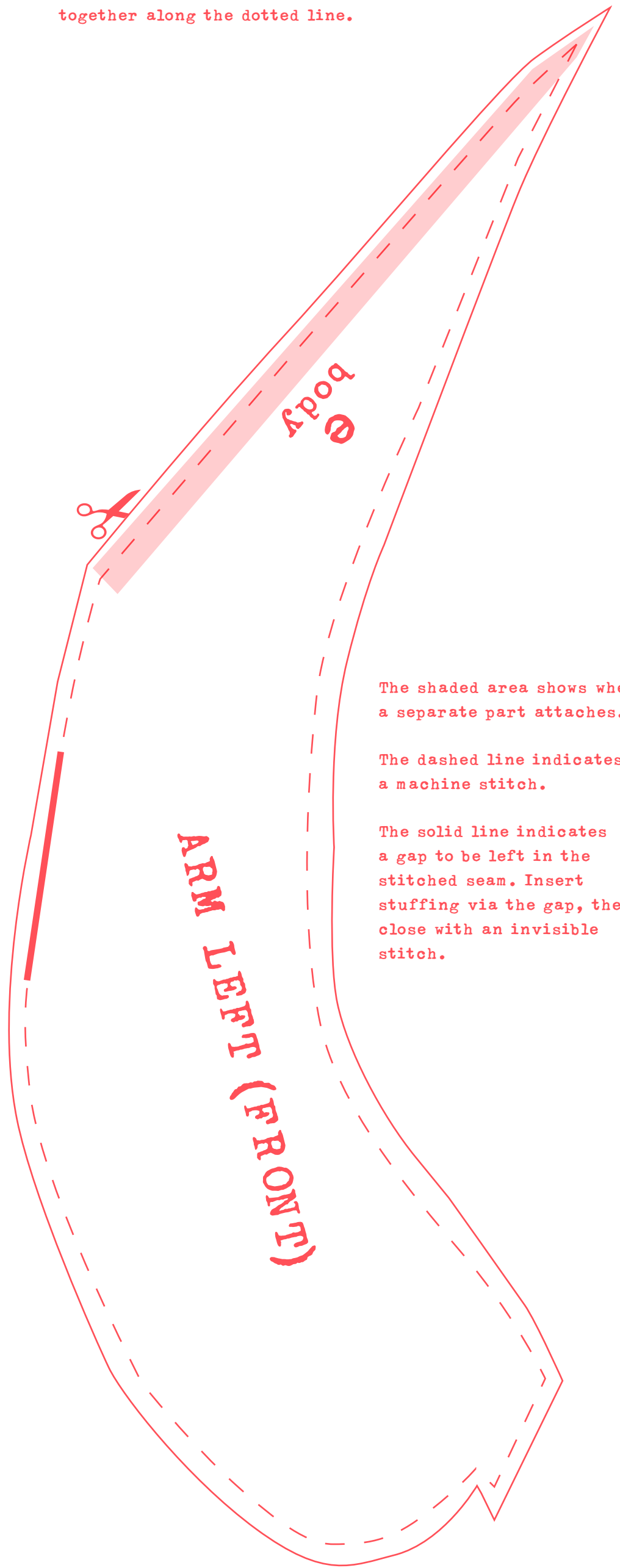
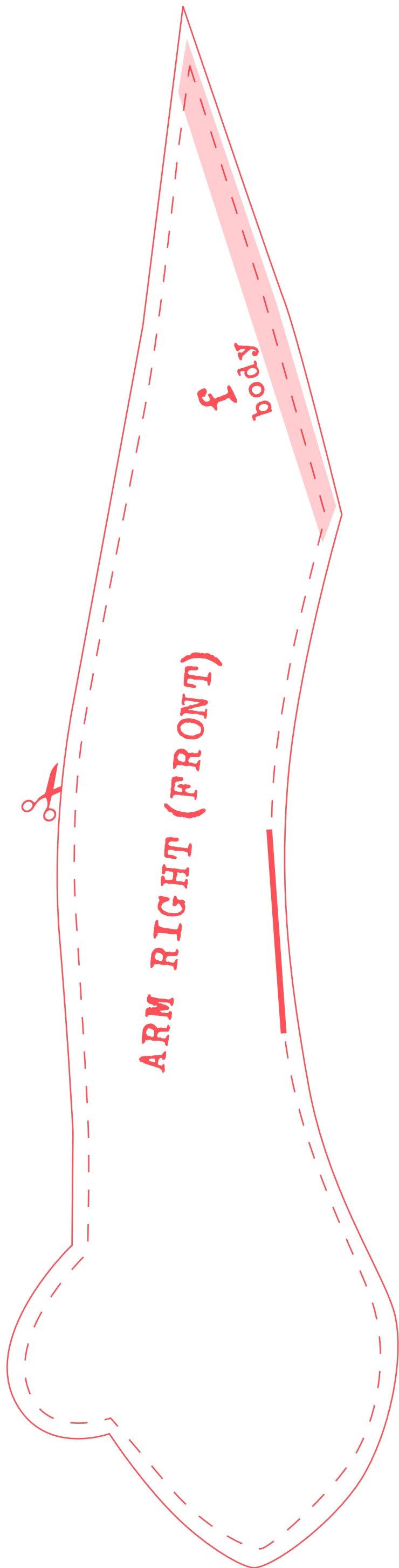
Stitch the two fabric pieces together along the dotted line.

The shaded area shows where a separate part attaches.

The dashed line indicates a machine stitch.

The solid line indicates a gap to be left in the stitched seam. Insert stuffing via the gap, then close with an invisible stitch.





Cut the pattern piece out of the paper along the solid line.

Pin the pattern to 2 layers of fabric. Cut the fabric to the shape of the pattern piece.

Stitch the two fabric pieces together along the dotted line.

The shaded area shows where a separate part attaches.

The dashed line indicates a machine stitch.

The solid line indicates a gap to be left in the stitched seam. Insert stuffing via the gap, then close with an invisible stitch.

This is the simple one piece pattern that you can use to make a mini version of the toy.

This is the exact shape of the dog toy in the book.

Cut the pattern piece out of the paper along the solid line.

Attach the nose any way you want.

Use your imagination to make your own toy using the pattern. (Some people have printed it on paper, stapled the pieces together around the edge and stuffed with torn up or shredded paper).

You may just want to colour in the pattern if you're not the three-dimensional type.

